



Test Type Step Rate Injection Test

Operator	Fictional Oil Company Inc.
Operator Contact	Joe Engineer
Well Name	Budgie 00N-0HZ
API	00-000-00000
Field/County/State	Midway/Kern/CA
Formation	Jurassic Park
Start Test Date	2025/09/01
Final Test Date	2025/09/03

Prepared By	Kennason Tech Services Inc.
Qualified By	Cory Strang
Report Date	2025/09/07



Pressure Survey Report

Step Rate Injection Test

Operator Fictional Oil Company Inc.
Company Rep Joe Engineer

Representative Sales Rep

General Information

Well Name	Budgie 00N-0HZ	KB Elevation (SL)	5034.000 ft
API	00-000-00000	GL Elevation (SL)	5018.000 ft
Well Type	Vertical	KB-GL Offset	16.000 ft
Field/County/State	Midway/Kern/CA		

Wellbore Information

Tubing OD	3.5 in	Casing OD	7.6 in
Tubing ID	3.0 in	Casing ID	7.0 in
Tubing Depth(Log KB)	9043.00000 ft	Casing Depth(Log KB)	9051.00000 ft
Tubing Depth(TVD KB)	9043.00000 ft	Casing Depth(TVD KB)	9051.00000 ft
Packer Depth(Log KB)	9039.40000 ft	PBTD(Log KB)	10098.000 ft
Packer Depth(TVD KB)	9039.40000 ft	PBTD(TVD KB)	10098.000 ft

Gross Completion Interval (GCI) as tested:

Top(Log KB)	9051.00 ft	Top(TVD KB)	9051.000 ft	Formation Name	Jurassic Park
Bottom(Log KB)	10098.00 ft	Bottom(TVD KB)	10098.000 ft	Pool	
MPP(Log KB)	9574.500 ft	MPP(TVD KB)	9574.500 ft		

Test Information

Test Type	Step Rate Injection Test	Date/Time Gauge on Bottom	2025/09/01 13:28:00
Well Fluid Type	06 Water	Date/Time Gauge Off Bottom	2025/09/03 11:12:05
Test Purpose	Other	Time/Date Well Shut-In	2025/09/02 06:52:25

Surface Pressures:

Tubing Pressure Initial	13.49 psi(a)	Casing Pressure Initial	13.49 psi(a)
Tubing Pressure: Final	13.49 psi(a)	Casing Pressure: Final	13.49 psi(a)

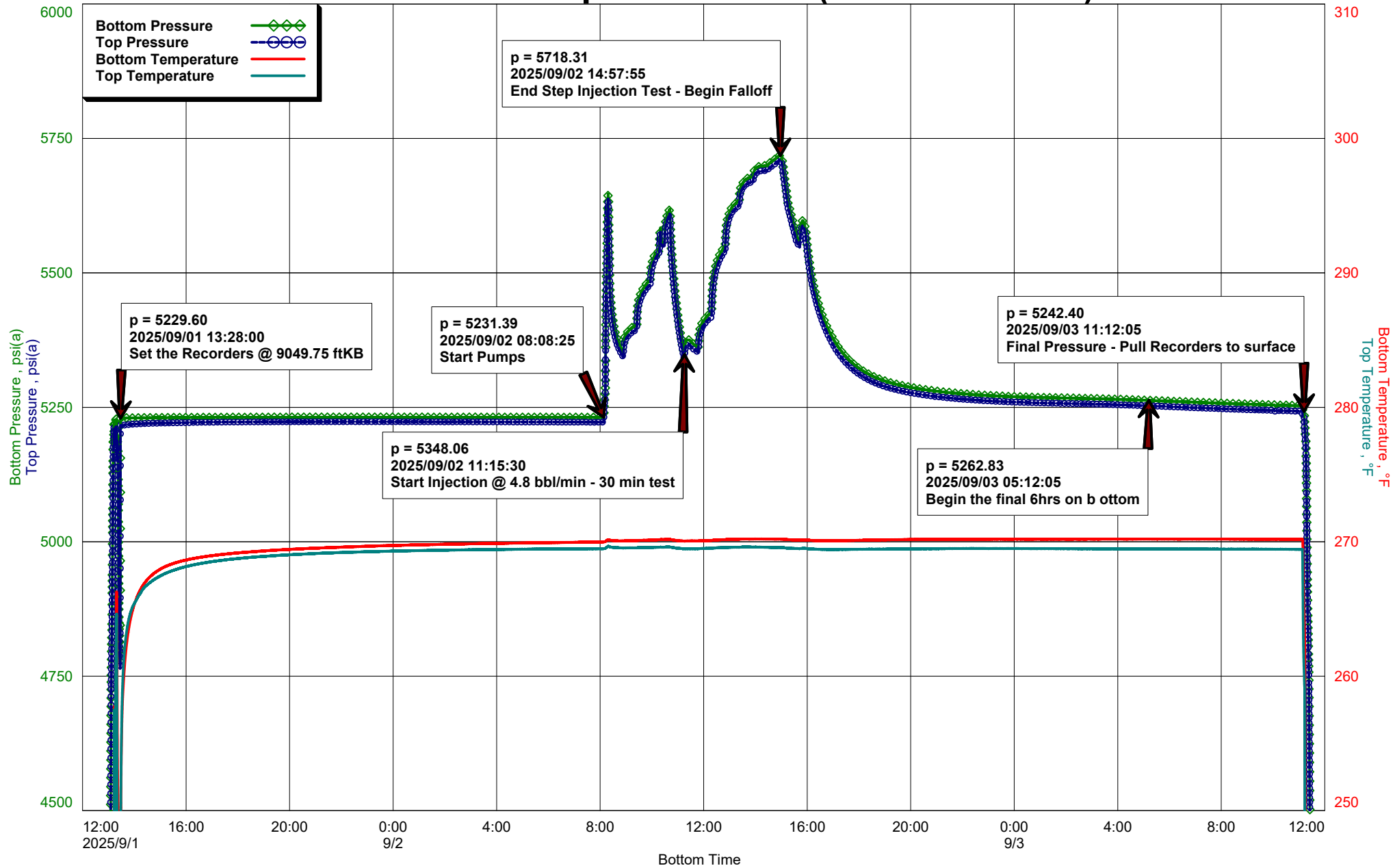
Test Results

Gauge Serial Number Used in Summary	79316	Run Depth (Log KB)	9049.75 ft
MPP(TVD KB)	9574.500 ft	Run Depth (TVD KB)	9049.75 ft
Representative Pressure at MPP	5469.62 psi(a)	Last Measured Pressure at Run Depth	5242.40 psi(a)
Reservoir Temperature	273.16 °F	Temperature at Run Depth	264.5 °F

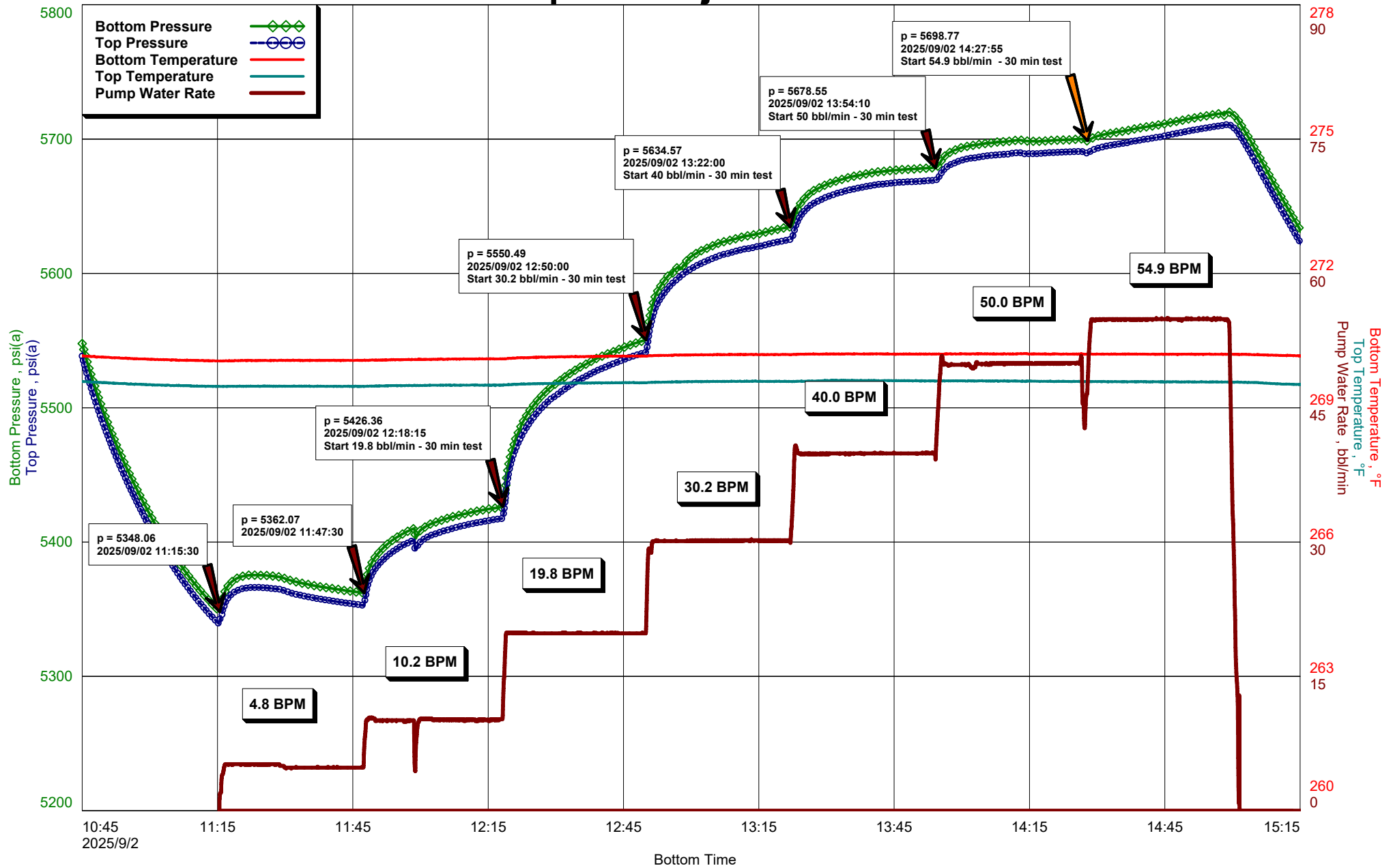
Test Remarks:

All Zones tested to determine Injection volumes and rates.
 4.5" Slotted Liner from 9051.00 - 10098.00 ftKB
 Used 0.443 psi/ft and 0.0165 F/ft for the pressure & temperature calcs to midpoint of the interval.

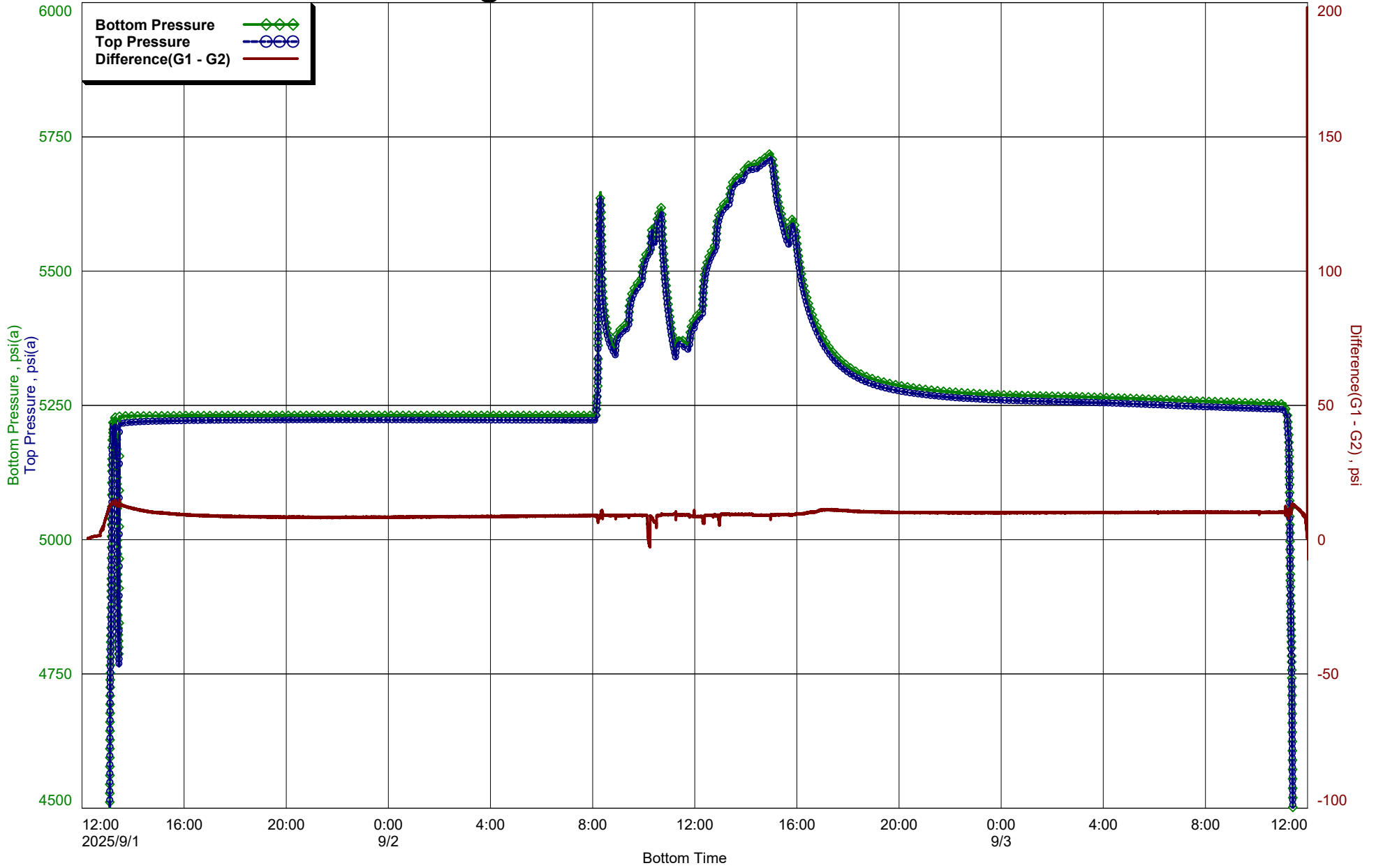
Pressure & Temperature Plot (Entire Data set)



Step Rate Injection Plot



Gauge Pressure Difference Plot



Recorder Information

Operator	Fictional Oil Company Inc.	Well Name	Budgie 00N-0HZ
API	00-000-00000	Formation	Jurassic Park
Start Test Date	2025/09/01		
Final Test Date	2025/09/03		

Gauge Name	Bottom	Gauge Type	Sapphire
Gauge Serial Number	110001	Gauge Manufacturer	KTSI
Run Depth (TVD KB)	9049.75	Gauge Model	KTSI02
Date of Last Calibration	2025/01/28	Maximum Recorder Range	10000.00
Gauge Start Date	2025/09/01	Gauge Start Time	12:13:35
Gauge Stop Date	2025/09/03	Gauge Stop Time	12:34:40
Date Gauge On Bottom	2025/09/01	Time Gauge On Bottom	13:28:00
Date Gauge Off Bottom	2025/09/03	Time Gauge Off Bottom	11:12:05

Gauge Name	Top	Gauge Type	Sapphire
Gauge Serial Number	110002	Gauge Manufacturer	KTSI
Run Depth (TVD KB)	9040.00	Gauge Model	KTSI02
Date of Last Calibration	2025/01/28	Maximum Recorder Range	10000.00
Gauge Start Date	2025/09/01	Gauge Start Time	12:13:35
Gauge Stop Date	2025/09/03	Gauge Stop Time	12:34:40
Date Gauge On Bottom	2025/09/01	Time Gauge On Bottom	13:28:00
Date Gauge Off Bottom	2025/09/03	Time Gauge Off Bottom	11:12:05

Operator
API
Start Test Date
Final Test Date

Fictional Oil Company Inc.
00-000-00000
2025/09/01
2025/09/03

Well Name Budgie 00N-0HZ
Formation Jurassic Park

	Bottom Date	Bottom Time	Bottom Pres.	Bottom Temp.	Top Time	Top Pres.	Top Temp.
	YYYY/MM/DD HH:mm:ss	h	psi(a)	°F	h	psi(a)	°F
1	2025/09/01 12:13:35	0.0000	16.77	69.92	0.0000	16.35	68.83
2	2025/09/01 12:30:15	0.2778	17.67	85.72	0.2778	16.34	84.27
3	2025/09/01 12:46:55	0.5556	983.85	74.24	0.5556	979.83	74.64
4	2025/09/01 13:03:35	0.8333	4195.71	194.35	0.8333	4183.95	200.00
5	2025/09/01 13:20:15	1.1111	5161.28	259.42	1.1111	5147.98	250.08
6	2025/09/01 13:28:00	1.2403	5229.60	238.06	1.2403	5216.58	241.08
7	Set the Recorders @ 9049.75 ftKB						
8							
9	2025/09/01 13:28:05	1.2417	5229.48	239.03	1.2417	5216.38	242.76
10	2025/09/01 13:36:55	1.3889	5229.44	260.54	1.3889	5216.72	261.75
11	2025/09/01 13:53:35	1.6667	5230.13	264.59	1.6667	5218.25	264.95
12	2025/09/01 14:10:15	1.9444	5230.35	266.19	1.9444	5219.09	265.99
13	2025/09/01 14:26:55	2.2222	5230.53	267.05	2.2222	5219.76	266.72
14	2025/09/01 14:43:35	2.5000	5230.66	267.59	2.5000	5220.42	267.13
15	2025/09/01 15:00:15	2.7778	5230.80	267.96	2.7778	5220.68	267.45
16	2025/09/01 15:16:55	3.0556	5230.73	268.23	3.0556	5220.91	267.70
17	2025/09/01 15:33:35	3.3333	5230.75	268.41	3.3333	5221.21	267.91
18	2025/09/01 15:50:15	3.6111	5230.91	268.57	3.6111	5221.54	268.08
19	2025/09/01 16:06:55	3.8889	5230.92	268.68	3.8889	5221.70	268.21
20	2025/09/01 16:23:35	4.1667	5231.14	268.80	4.1667	5221.92	268.31
21	2025/09/01 16:40:15	4.4444	5231.06	268.87	4.4444	5222.14	268.42
22	2025/09/01 16:56:55	4.7222	5231.11	268.95	4.7222	5222.25	268.50
23	2025/09/01 17:13:35	5.0000	5231.19	269.01	5.0000	5222.32	268.58
24	2025/09/01 17:30:15	5.2778	5231.19	269.07	5.2778	5222.50	268.65
25	2025/09/01 17:46:55	5.5556	5231.15	269.13	5.5556	5222.61	268.70
26	2025/09/01 18:03:35	5.8333	5231.25	269.17	5.8333	5222.73	268.76
27	2025/09/01 18:20:15	6.1111	5231.45	269.23	6.1111	5222.64	268.81
28	2025/09/01 18:36:55	6.3889	5231.38	269.27	6.3889	5222.86	268.84
29	2025/09/01 18:53:35	6.6667	5231.39	269.30	6.6667	5222.95	268.90
30	2025/09/01 19:10:15	6.9444	5231.47	269.34	6.9444	5222.95	268.93
31	2025/09/01 19:26:55	7.2222	5231.54	269.37	7.2222	5223.04	268.97
32	2025/09/01 19:43:35	7.5000	5231.41	269.40	7.5000	5223.08	269.00
33	2025/09/01 20:00:15	7.7778	5231.47	269.42	7.7778	5223.15	269.03
34	2025/09/01 20:16:55	8.0556	5231.53	269.46	8.0556	5223.18	269.05
35	2025/09/01 20:33:35	8.3333	5231.53	269.49	8.3333	5223.15	269.08
36	2025/09/01 20:50:15	8.6111	5231.57	269.51	8.6111	5223.24	269.11
37	2025/09/01 21:06:55	8.8889	5231.50	269.53	8.8889	5223.28	269.14
38	2025/09/01 21:23:35	9.1667	5231.49	269.55	9.1667	5223.27	269.15
39	2025/09/01 21:40:15	9.4444	5231.62	269.57	9.4444	5223.37	269.18
40	2025/09/01 21:56:55	9.7222	5231.70	269.59	9.7222	5223.27	269.19
41	2025/09/01 22:13:35	10.0000	5231.59	269.61	10.0000	5223.20	269.21
42	2025/09/01 22:30:15	10.2778	5231.50	269.63	10.2778	5223.28	269.23
43	2025/09/01 22:46:55	10.5556	5231.61	269.65	10.5556	5223.28	269.24
44	2025/09/01 23:03:35	10.8333	5231.65	269.66	10.8333	5223.22	269.25
45	2025/09/01 23:20:15	11.1111	5231.55	269.68	11.1111	5223.17	269.26

Print Filter: Approximately every 200 lines

Gauge Name	Serial Number	Start Date	Start Time	Run Depth (TVD)
Bottom	110001	2025/09/01	12:13:35	9049.75 ft
Top	110002	2025/09/01	12:13:35	9040.00 ft

Operator
API
Start Test Date
Final Test Date

Fictional Oil Company Inc.
00-000-00000
2025/09/01
2025/09/03

Well Name Budgie 00N-0HZ
Formation Jurassic Park

	Bottom Date	Bottom Time	Bottom Pres.	Bottom Temp.	Top Time	Top Pres.	Top Temp.
	YYYY/MM/DD HH:mm:ss	h	psi(a)	°F	h	psi(a)	°F
46	2025/09/01 23:36:55	11.3889	5231.61	269.71	11.3889	5223.28	269.28
47	2025/09/01 23:53:35	11.6667	5231.61	269.71	11.6667	5223.16	269.29
48	2025/09/02 00:10:15	11.9444	5231.58	269.73	11.9444	5223.20	269.32
49	2025/09/02 00:26:55	12.2222	5231.55	269.73	12.2222	5223.12	269.32
50	2025/09/02 00:43:35	12.5000	5231.50	269.75	12.5000	5223.03	269.33
51	2025/09/02 01:00:15	12.7778	5231.53	269.77	12.7778	5223.07	269.34
52	2025/09/02 01:16:55	13.0556	5231.53	269.78	13.0556	5222.97	269.35
53	2025/09/02 01:33:35	13.3333	5231.55	269.79	13.3333	5223.01	269.35
54	2025/09/02 01:50:15	13.6111	5231.57	269.80	13.6111	5222.91	269.37
55	2025/09/02 02:06:55	13.8889	5231.44	269.82	13.8889	5223.01	269.38
56	2025/09/02 02:23:35	14.1667	5231.47	269.82	14.1667	5222.97	269.39
57	2025/09/02 02:40:15	14.4444	5231.44	269.84	14.4444	5222.97	269.39
58	2025/09/02 02:56:55	14.7222	5231.43	269.84	14.7222	5222.87	269.40
59	2025/09/02 03:13:35	15.0000	5231.37	269.86	15.0000	5222.79	269.40
60	2025/09/02 03:30:15	15.2778	5231.44	269.86	15.2778	5222.87	269.41
61	2025/09/02 03:46:55	15.5556	5231.37	269.87	15.5556	5222.82	269.42
62	2025/09/02 04:03:35	15.8333	5231.37	269.87	15.8333	5222.79	269.41
63	2025/09/02 04:20:15	16.1111	5231.44	269.88	16.1111	5222.65	269.43
64	2025/09/02 04:36:55	16.3889	5231.37	269.90	16.3889	5222.79	269.44
65	2025/09/02 04:53:35	16.6667	5231.40	269.91	16.6667	5222.65	269.44
66	2025/09/02 05:10:15	16.9444	5231.35	269.91	16.9444	5222.71	269.45
67	2025/09/02 05:26:55	17.2222	5231.46	269.92	17.2222	5222.62	269.45
68	2025/09/02 05:43:35	17.5000	5231.50	269.93	17.5000	5222.76	269.46
69	2025/09/02 06:00:15	17.7778	5231.30	269.92	17.7778	5222.47	269.46
70	2025/09/02 06:16:55	18.0556	5231.37	269.94	18.0556	5222.49	269.46
71	2025/09/02 06:33:35	18.3333	5231.41	269.94	18.3333	5222.51	269.47
72	2025/09/02 06:50:15	18.6111	5231.34	269.95	18.6111	5222.51	269.48
73	2025/09/02 07:06:55	18.8889	5231.29	269.95	18.8889	5222.41	269.47
74	2025/09/02 07:23:35	19.1667	5231.35	269.97	19.1667	5222.36	269.47
75	2025/09/02 07:40:15	19.4444	5231.34	269.97	19.4444	5222.31	269.48
76	2025/09/02 07:56:55	19.7222	5231.25	269.97	19.7222	5222.37	269.48
77	2025/09/02 08:08:25	19.9139	5231.39	269.98	19.9139	5222.40	269.48
78	Start Pumps						
79	2025/09/02 08:08:30	19.9153	5231.53	269.98	19.9153	5222.61	269.49
80	2025/09/02 08:13:35	20.0000	5441.55	270.06	20.0000	5433.31	269.55
81	2025/09/02 08:30:15	20.2778	5408.56	270.09	20.2778	5399.49	269.58
82	2025/09/02 08:46:55	20.5556	5362.02	270.07	20.5556	5353.11	269.55
83	2025/09/02 09:03:35	20.8333	5390.21	270.07	20.8333	5381.27	269.55
84	2025/09/02 09:20:15	21.1111	5401.54	270.08	21.1111	5392.59	269.54
85	2025/09/02 09:36:55	21.3889	5466.39	270.10	21.3889	5457.33	269.57
86	2025/09/02 09:53:35	21.6667	5485.16	270.11	21.6667	5476.02	269.57
87	2025/09/02 10:10:15	21.9444	5530.20	270.14	21.9444	5529.40	269.58
88	2025/09/02 10:26:55	22.2222	5556.57	270.16	22.2222	5550.11	269.59
89	2025/09/02 10:43:35	22.5000	5569.93	270.16	22.5000	5560.59	269.59
90	2025/09/02 11:00:15	22.7778	5418.92	270.08	22.7778	5409.55	269.52

Print Filter: Approximately every 200 lines

Gauge Name	Serial Number	Start Date	Start Time	Run Depth (TVD)
Bottom	110001	2025/09/01	12:13:35	9049.75 ft
Top	110002	2025/09/01	12:13:35	9040.00 ft

Operator
API
Start Test Date
Final Test Date

Fictional Oil Company Inc.
00-000-00000
2025/09/01
2025/09/03

Well Name Budgie 00N-0HZ
Formation Jurassic Park

	Bottom Date	Bottom Time	Bottom Pres.	Bottom Temp.	Top Time	Top Pres.	Top Temp.
	YYYY/MM/DD HH:mm:ss	h	psi(a)	°F	h	psi(a)	°F
91	2025/09/02 11:15:30	23.0319	5348.06	270.04	23.0319	5338.58	269.48
92	Start Injection @ 4.8 bbl/min - 30 min test						
93							
94	2025/09/02 11:15:35	23.0333	5350.06	270.05	23.0333	5342.76	269.48
95	2025/09/02 11:16:55	23.0556	5365.17	270.06	23.0556	5355.95	269.47
96	2025/09/02 11:33:35	23.3333	5369.61	270.06	23.3333	5360.20	269.49
97	2025/09/02 11:47:30	23.5653	5362.07	270.06	23.5653	5352.87	269.47
98	Start 10.2 bbl/min - 30 min test						
99	2025/09/02 11:47:35	23.5667	5362.93	270.07	23.5667	5354.66	269.48
100	2025/09/02 11:50:15	23.6111	5390.11	270.07	23.6111	5381.24	269.49
101	2025/09/02 12:06:55	23.8889	5418.55	270.09	23.8889	5409.89	269.50
102	2025/09/02 12:18:15	24.0778	5426.36	270.10	24.0778	5417.59	269.51
103	Start 19.8 bbl/min - 30 min test						
104							
105	2025/09/02 12:18:20	24.0792	5426.91	270.09	24.0792	5418.77	269.50
106	2025/09/02 12:23:35	24.1667	5494.61	270.12	24.1667	5485.61	269.53
107	2025/09/02 12:40:15	24.4444	5538.37	270.14	24.4444	5529.13	269.56
108	2025/09/02 12:50:00	24.6069	5550.49	270.15	24.6069	5541.24	269.55
109	Start 30.2 bbl/min - 30 min test						
110							
111	2025/09/02 12:50:05	24.6083	5551.06	270.15	24.6083	5542.10	269.56
112	2025/09/02 12:56:55	24.7222	5604.27	270.18	24.7222	5595.71	269.57
113	2025/09/02 13:13:35	25.0000	5628.62	270.19	25.0000	5619.16	269.60
114	2025/09/02 13:22:00	25.1403	5634.57	270.18	25.1403	5625.17	269.58
115	Start 40 bbl/min - 30 min test						
116							
117	2025/09/02 13:22:05	25.1417	5634.76	270.19	25.1417	5625.41	269.59
118	2025/09/02 13:30:15	25.2778	5666.50	270.19	25.2778	5657.16	269.61
119	2025/09/02 13:46:55	25.5556	5677.32	270.20	25.5556	5667.90	269.60
120	2025/09/02 13:54:10	25.6764	5678.55	270.20	25.6764	5669.26	269.59
121	Start 50 bbl/min - 30 min test						
122							
123	2025/09/02 13:54:15	25.6778	5678.82	270.20	25.6778	5669.36	269.60
124	2025/09/02 14:03:35	25.8333	5695.90	270.21	25.8333	5686.46	269.60
125	2025/09/02 14:20:15	26.1111	5699.07	270.20	26.1111	5689.97	269.58
126	2025/09/02 14:27:55	26.2389	5698.77	270.20	26.2389	5689.61	269.58
127	Start 54.9 bbl/min - 30 min test						
128	2025/09/02 14:28:00	26.2403	5698.95	270.20	26.2403	5689.88	269.59
129	2025/09/02 14:36:55	26.3889	5706.50	270.20	26.3889	5697.43	269.58
130	2025/09/02 14:53:35	26.6667	5716.95	270.19	26.6667	5707.78	269.57
131	2025/09/02 14:57:55	26.7389	5718.31	270.19	26.7389	5710.33	269.58
132	End Step Injection Test - Begin Falloff						
133	2025/09/02 14:58:00	26.7403	5718.15	270.19	26.7403	5710.23	269.57
134	2025/09/02 15:10:15	26.9444	5660.41	270.17	26.9444	5651.08	269.53
135	2025/09/02 15:26:55	27.2222	5594.80	270.14	27.2222	5585.42	269.50

Print Filter: Approximately every 200 lines

Gauge Name	Serial Number	Start Date	Start Time	Run Depth (TVD)
Bottom	110001	2025/09/01	12:13:35	9049.75 ft
Top	110002	2025/09/01	12:13:35	9040.00 ft

Operator
API
Start Test Date
Final Test Date

Fictional Oil Company Inc.
00-000-00000
2025/09/01
2025/09/03

Well Name Budgie 00N-0HZ
Formation Jurassic Park

	Bottom Date	Bottom Time	Bottom Pres.	Bottom Temp.	Top Time	Top Pres.	Top Temp.
	YYYY/MM/DD HH:mm:ss	h	psi(a)	°F	h	psi(a)	°F
136	2025/09/02 15:43:35	27.5000	5570.02	270.13	27.5000	5561.00	269.49
137	2025/09/02 16:00:15	27.7778	5549.11	270.12	27.7778	5539.68	269.49
138	2025/09/02 16:16:55	28.0556	5468.98	270.09	28.0556	5459.20	269.45
139	2025/09/02 16:33:35	28.3333	5424.17	270.07	28.3333	5413.81	269.42
140	2025/09/02 16:50:15	28.6111	5392.33	270.07	28.6111	5381.76	269.43
141	2025/09/02 17:06:55	28.8889	5368.49	270.07	28.8889	5357.37	269.42
142	2025/09/02 17:23:35	29.1667	5349.91	270.08	29.1667	5338.86	269.43
143	2025/09/02 17:40:15	29.4444	5335.74	270.09	29.4444	5324.78	269.43
144	2025/09/02 17:56:55	29.7222	5324.77	270.10	29.7222	5313.87	269.44
145	2025/09/02 18:13:35	30.0000	5315.68	270.11	30.0000	5305.11	269.44
146	2025/09/02 18:30:15	30.2778	5308.55	270.13	30.2778	5298.01	269.45
147	2025/09/02 18:46:55	30.5556	5302.68	270.13	30.5556	5292.27	269.45
148	2025/09/02 19:03:35	30.8333	5298.06	270.15	30.8333	5287.67	269.45
149	2025/09/02 19:20:15	31.1111	5294.16	270.15	31.1111	5283.92	269.46
150	2025/09/02 19:36:55	31.3889	5290.92	270.15	31.3889	5280.76	269.46
151	2025/09/02 19:53:35	31.6667	5288.03	270.15	31.6667	5278.02	269.47
152	2025/09/02 20:10:15	31.9444	5285.73	270.16	31.9444	5275.49	269.47
153	2025/09/02 20:26:55	32.2222	5283.54	270.17	32.2222	5273.52	269.48
154	2025/09/02 20:43:35	32.5000	5281.59	270.17	32.5000	5271.45	269.47
155	2025/09/02 21:00:15	32.7778	5279.94	270.17	32.7778	5269.82	269.48
156	2025/09/02 21:16:55	33.0556	5278.41	270.18	33.0556	5268.34	269.48
157	2025/09/02 21:33:35	33.3333	5276.97	270.19	33.3333	5267.02	269.50
158	2025/09/02 21:50:15	33.6111	5275.90	270.19	33.6111	5265.82	269.49
159	2025/09/02 22:06:55	33.8889	5274.71	270.19	33.8889	5264.70	269.50
160	2025/09/02 22:23:35	34.1667	5273.79	270.19	34.1667	5263.75	269.50
161	2025/09/02 22:40:15	34.4444	5272.85	270.19	34.4444	5262.81	269.49
162	2025/09/02 22:56:55	34.7222	5272.08	270.19	34.7222	5262.04	269.49
163	2025/09/02 23:13:35	35.0000	5271.34	270.19	35.0000	5261.28	269.49
164	2025/09/02 23:30:15	35.2778	5270.66	270.19	35.2778	5260.68	269.49
165	2025/09/02 23:46:55	35.5556	5270.12	270.19	35.5556	5260.17	269.49
166	2025/09/03 00:03:35	35.8333	5269.61	270.19	35.8333	5259.64	269.49
167	2025/09/03 00:20:15	36.1111	5269.17	270.20	36.1111	5259.06	269.49
168	2025/09/03 00:36:55	36.3889	5268.76	270.19	36.3889	5258.71	269.49
169	2025/09/03 00:53:35	36.6667	5268.41	270.19	36.6667	5258.32	269.49
170	2025/09/03 01:10:15	36.9444	5268.11	270.19	36.9444	5258.00	269.48
171	2025/09/03 01:26:55	37.2222	5267.68	270.19	37.2222	5257.64	269.49
172	2025/09/03 01:43:35	37.5000	5267.44	270.19	37.5000	5257.36	269.49
173	2025/09/03 02:00:15	37.7778	5267.13	270.19	37.7778	5257.01	269.48
174	2025/09/03 02:16:55	38.0556	5266.88	270.19	38.0556	5256.73	269.47
175	2025/09/03 02:33:35	38.3333	5266.62	270.19	38.3333	5256.52	269.47
176	2025/09/03 02:50:15	38.6111	5266.32	270.20	38.6111	5256.27	269.48
177	2025/09/03 03:06:55	38.8889	5266.08	270.20	38.8889	5255.91	269.48
178	2025/09/03 03:23:35	39.1667	5265.65	270.19	39.1667	5255.51	269.46
179	2025/09/03 03:40:15	39.4444	5265.24	270.20	39.4444	5255.18	269.47
180	2025/09/03 03:56:55	39.7222	5264.89	270.20	39.7222	5254.76	269.47

Print Filter: Approximately every 200 lines

Gauge Name	Serial Number	Start Date	Start Time	Run Depth (TVD)
Bottom	110001	2025/09/01	12:13:35	9049.75 ft
Top	110002	2025/09/01	12:13:35	9040.00 ft

Operator
API
Start Test Date
Final Test Date

Fictional Oil Company Inc.
00-000-00000
2025/09/01
2025/09/03

Well Name Budgie 00N-0HZ
Formation Jurassic Park

	Bottom Date	Bottom Time	Bottom Pres.	Bottom Temp.	Top Time	Top Pres.	Top Temp.
	YYYY/MM/DD HH:mm:ss	h	psi(a)	°F	h	psi(a)	°F
181	2025/09/03 04:13:35	40.0000	5264.39	270.19	40.0000	5254.39	269.47
182	2025/09/03 04:30:15	40.2778	5263.93	270.19	40.2778	5253.89	269.47
183	2025/09/03 04:46:55	40.5556	5263.53	270.20	40.5556	5253.40	269.46
184	2025/09/03 05:03:35	40.8333	5263.05	270.20	40.8333	5252.96	269.47
185	2025/09/03 05:12:05	40.9750	5262.83	270.20	40.9750	5252.71	269.47
186	Begin the final 6hrs on bottom						
187	2025/09/03 05:12:10	40.9764	5262.73	270.20	40.9764	5252.67	269.47
188	2025/09/03 05:20:15	41.1111	5262.57	270.19	41.1111	5252.45	269.46
189	2025/09/03 05:36:55	41.3889	5262.02	270.20	41.3889	5251.75	269.45
190	2025/09/03 05:53:35	41.6667	5261.54	270.20	41.6667	5251.29	269.46
191	2025/09/03 06:10:15	41.9444	5260.97	270.19	41.9444	5250.94	269.46
192	2025/09/03 06:26:55	42.2222	5260.45	270.19	42.2222	5250.18	269.45
193	2025/09/03 06:43:35	42.5000	5259.86	270.19	42.5000	5249.69	269.46
194	2025/09/03 07:00:15	42.7778	5259.29	270.19	42.7778	5249.13	269.46
195	2025/09/03 07:16:55	43.0556	5258.86	270.20	43.0556	5248.77	269.45
196	2025/09/03 07:33:35	43.3333	5258.40	270.20	43.3333	5248.10	269.45
197	2025/09/03 07:50:15	43.6111	5257.93	270.20	43.6111	5247.72	269.45
198	2025/09/03 08:06:55	43.8889	5257.34	270.19	43.8889	5247.08	269.44
199	2025/09/03 08:23:35	44.1667	5256.95	270.20	44.1667	5246.62	269.45
200	2025/09/03 08:40:15	44.4444	5256.44	270.20	44.4444	5246.27	269.45
201	2025/09/03 08:56:55	44.7222	5256.00	270.19	44.7222	5245.81	269.45
202	2025/09/03 09:13:35	45.0000	5255.50	270.19	45.0000	5245.40	269.45
203	2025/09/03 09:30:15	45.2778	5255.16	270.20	45.2778	5244.82	269.45
204	2025/09/03 09:46:55	45.5556	5254.73	270.19	45.5556	5244.52	269.45
205	2025/09/03 10:03:35	45.8333	5253.88	270.19	45.8333	5243.43	269.44
206	2025/09/03 10:20:15	46.1111	5253.88	270.19	46.1111	5243.66	269.44
207	2025/09/03 10:36:55	46.3889	5253.48	270.19	46.3889	5243.31	269.44
208	2025/09/03 10:53:35	46.6667	5252.94	270.19	46.6667	5242.62	269.43
209	2025/09/03 11:10:15	46.9444	5242.38	267.41	46.9444	5232.15	263.06
210	2025/09/03 11:12:05	46.9750	5242.40	264.48	46.9750	5232.17	260.29
211	Final Pressure - Pull Recorders to surface						
212							
213	2025/09/03 11:12:10	46.9764	5241.80	264.38	46.9764	5230.74	260.22
214	2025/09/03 11:26:55	47.2222	4343.31	206.49	47.2222	4330.25	208.05
215	2025/09/03 11:43:35	47.5000	2520.15	135.73	47.5000	2509.43	121.39
216	2025/09/03 12:00:15	47.7778	125.22	68.39	47.7778	118.41	65.69
217	2025/09/03 12:16:55	48.0556	17.39	78.56	48.0556	16.37	77.59
218	2025/09/03 12:33:35	48.3333	17.59	82.25	48.3333	16.41	86.73
219	2025/09/03 12:34:40	48.3514	17.75	84.53	48.3514	16.49	89.11

Print Filter: Approximately every 200 lines

Gauge Name	Serial Number	Start Date	Start Time	Run Depth (TVD)
Bottom	110001	2025/09/01	12:13:35	9049.75 ft
Top	110002	2025/09/01	12:13:35	9040.00 ft